



Technological Solutions Limited (TSL) began operations in July 1996 and has an enviable reputation for its work in preparing organizations to deal with the practical realities of competing in the globalized business environment. TSL and its subsidiaries offer a comprehensive range of technical services to support the productive and hospitality sectors in Jamaica and the Caribbean. TSL's laboratory was the first in the Caribbean to receive ISO accreditation and currently is ISO 17025 accredited by A2LA.

TSL's objective is to consistently exceed its clients expectations while holding to its core values of being *Science Based, Customer Focussed and Client Driven* in its conduct of business.

Unit 31, The Trade Centre
30-32 Red Hills Road
Kingston 10, St. Andrew
Jamaica, W.I.

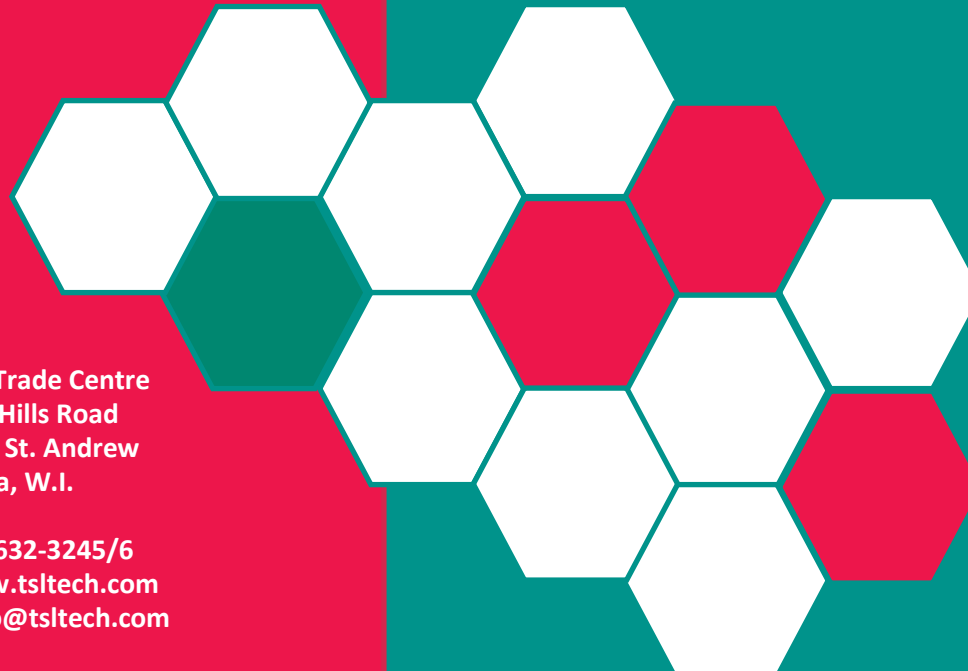
Tele: 876-632-3245/6
Website: www.tsltech.com
Email: biz.info@tsltech.com

TECHNOLOGICAL SOLUTIONS LIMITED



**TSL RAPID ASSESSMENT FOR
COVID-19 RESILIENCE (TSL RAC)**

**TSL COVID-19 ASSESSMENT AND
READINESS EVALUATION
(TSL CARE)**





*TSL Rapid Assessment for
COVID-19 Resilience (TSL-RAC)*

TSL RAC will provide a rapid assessment of your entity's readiness in its COVID-19 preparedness. This assessment gives an indication of the gaps in any existing protocols, or measures which you may need to implement or improve in order to provide the assurance that your facility has captured the primary measures required to prevent or mitigate the effects of the coronavirus in order to protect your team members, clientele/customers and stakeholders.

tsl rac

“Science Supporting your Business”

*TSL COVID-19 Assessment and
Readiness Evaluation (TSL CARE)*

TSL CARE provides a comprehensive evaluation of your entity's COVID-19 preparation, implementation, management, control and mitigation. This evaluation includes a full investigation and analysis of measures which may have been implemented to prevent and control contamination. TSL CARE covers, in detail, risk identification for personnel, visitors, facilities, operations and systems, and includes specific steps to identify and prevent a COVID-19 positive visitor/guest, team member, contractor or a supplier from entering your facility. It includes comprehensive, level-appropriate training for all staff, using specifically tailored material that is scientifically accurate. TSL will verify that any implemented system is working, through a combination of auditing and analytical testing.

The supporting and scientific actions, training, risk assessments, communication, information source and dissemination is evaluated for validity and effectiveness.

tsl care

“Science Supporting your Health”